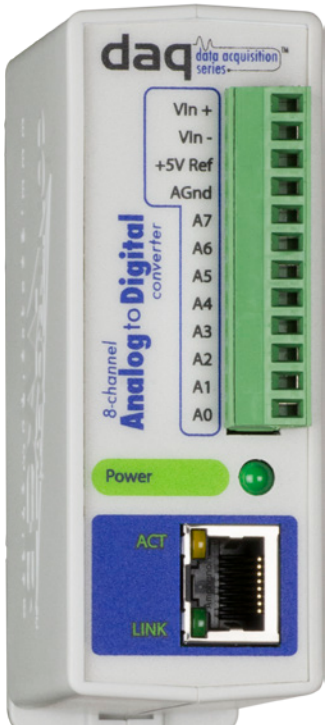


## PRODUCT OVERVIEW



The Analog Module provides a very accurate way to remotely monitor analog signals over an IP network.

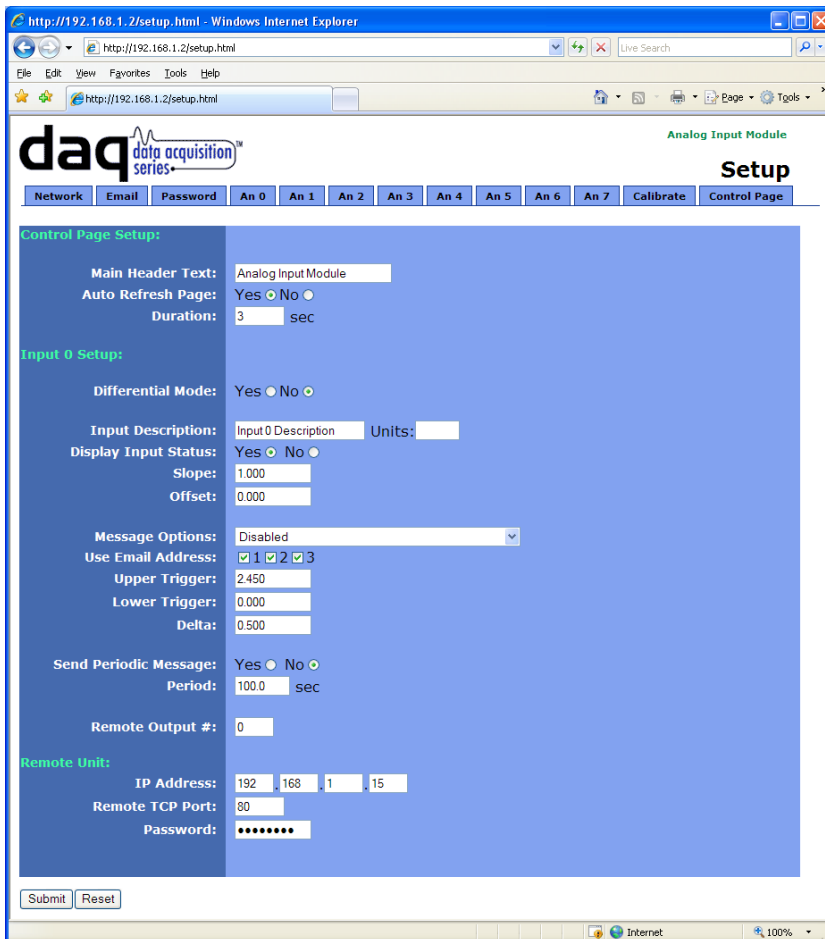
Using analog sensors (not provided), many real-world values such as position, water level, flow, voltage, current, etc., can be measured and viewed remotely. Up to eight analog signals can be connected to the module.

The Analog Module has a built-in web server which allows the inputs to be monitored in real time using a web browser. In addition, data can be accessed from a PLC or custom computer application using Modbus TCP/IP or XML.

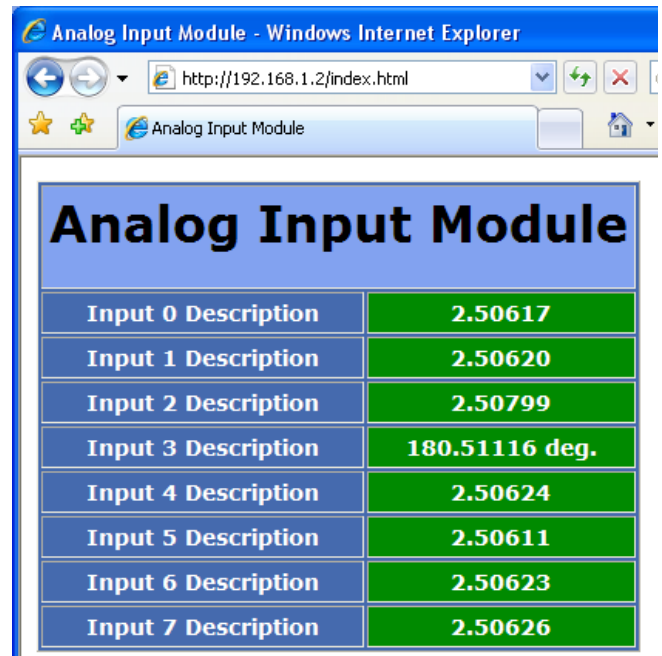
The Analog Module is fully configured in minutes using browser-based setup pages. No additional software is needed.

### Features:

- Connect up to eight analog signals.
- Accurate, instrumentation grade ADC.
- No programming required.
- Built-in web server.
- Configurable control and status web page.
- Email alerts.
- Modbus TCP/IP support.
- XML formatted status.
- Selectable TCP ports.
- 12-Pin removable terminal connector included.
- Rugged DIN-Rail/wall mountable enclosure.
- Wide power supply range (9-28 VDC).



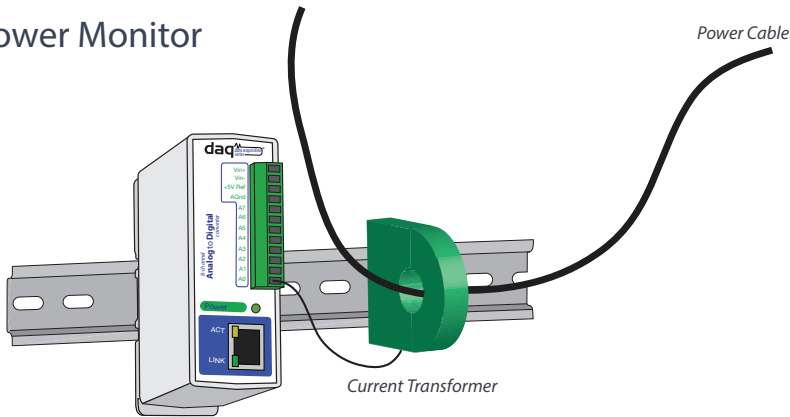
Input Options



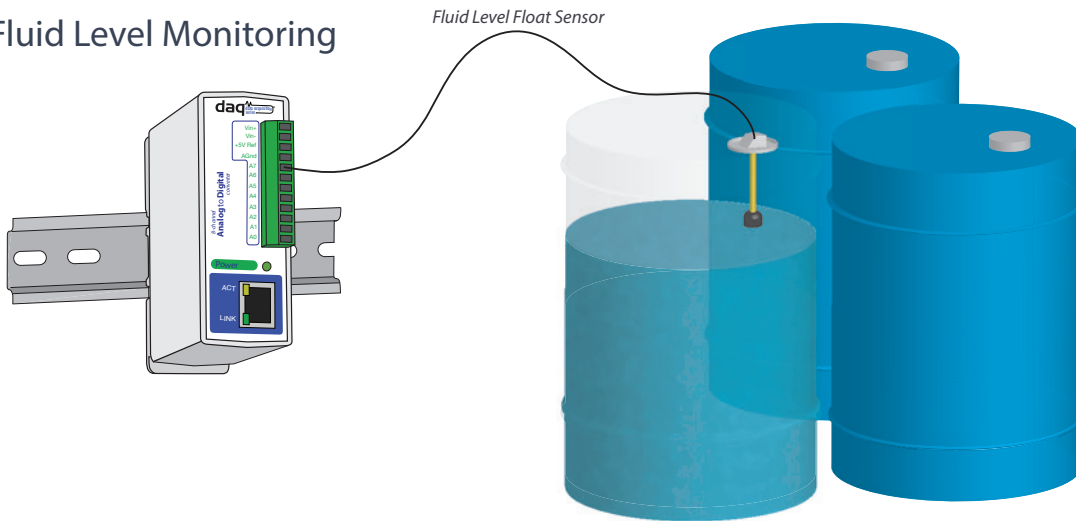
Control Page

## APPLICATIONS & SPECS

### Power Monitor



### Fluid Level Monitoring



## Additional Applications

- ✓ Voltage Monitor
- ✓ Current Monitor
- ✓ Monitor Temperature
- ✓ Monitor Water Flow
- ✓ Monitor Position Height
- ✓ More...

### Models:

- X-DAQ-8A5-I

### Power Requirements

- Voltage: 9-28VDC
- Max Current: 300mA Max

### Analog Inputs

- Number of Inputs: 8
- Type: Can be configured as 8 single-ended, 4 differential, or a combination
- Input Range: 0-5VDC
- \*\*Note that inputs have high impedance so input range can easily be adjusted using external resistors. Example: 0 to 10 Volt or 4-20mA
- Resolution: 10µV (24 bit ΣΔ ADC)
- Reference: 5.00V, 0.04%, 3ppm/C, 50mA Max

### Network

- Type: 10/100 Base-T Ethernet Port
- Setup: Static IP address assignment. TCP port selectable

### Connectors

- Power & Analog Inputs 1-8: 12-Position 3.81mm Removable
- Network: 8-pin RJ-45

### LED Indicators

- Number of LEDs: 3
  - Power on
  - Network linked
  - Network activity

### Physical

- Operating Temperature: -40°F to 150°F (-40°C to 65.5°C)
- Size:
  - 1.41in (35.7mm) wide
  - 3.88in (98.5mm) tall
  - 3.1in (78mm) deep (not including connector)
- Weight: 5 oz (142 grams)
- Enclosure Material: Lexan 940 Polycarbonate Plastic
- Enclosure Flame Rating: UL94 V0

### Protocols

- HTTP, XML, Modbus TCP/IP, SMTP

### Password Settings

- Password protection on setup page: Yes
- Password protection on control page: Optional
- Password Encoding: Base 64
- Max Password Length: 10 Characters