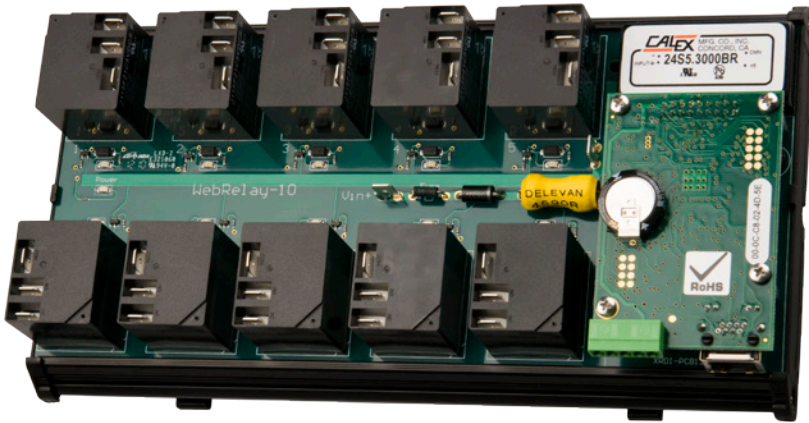


### PRODUCT OVERVIEW



The full featured WebRelay-10 Plus™ has all the features found on WebRelay-10™, plus much more.

Additional features include an event scheduler, customizable email alerts, two discrete inputs, device logging, and remote temperature and/or humidity monitoring.

### Features:

- Event scheduler with yearly calendar. Schedule up to 100 events.
- Customizable email alerts.
- Up to eight temperature and/or humidity sensors can be added for environmental monitoring (one temperature sensor included).
- Dry-contact sensors or switches can be connected for local control of relays or for monitoring external devices.
- Logging; log relay changes, events, Modbus TCP/IP requests, high/low temperatures, input changes, network traffic, and more.
- Real-time clock, can automatically adjust for daylight savings time, sync with NTP server.
- System log provides detailed diagnostic information.
- Simple scripts can be written in BASIC for advanced functionality.
- Configure manually or with DHCP.

**WebRelay-10**

Input 1	ON	Reset Count	Count = 157
Input 2	OFF	Reset Count	Count = 129
Relay 1	ON	ON OFF PULSE	
Relay 2	ON	ON OFF PULSE	
Relay 3	ON	ON OFF PULSE	
Relay 4	OFF	ON OFF PULSE	
Relay 5	ON	ON OFF PULSE	
Relay 6	OFF	ON OFF PULSE	
Relay 7	ON	ON OFF PULSE	
Relay 8	OFF	ON OFF PULSE	
Relay 9	ON	ON OFF PULSE	
Relay 10	ON	ON OFF PULSE	
Sensor 1	81.9 °F		
Sensor 2	76.4 °F		
Sensor 3	82.2 °F		
Current Time: Mon, 15 Nov 2010 10:59:01			

WebRelay-10 Plus Control Page

**Setup**

**Event 6**

Current Date/Time: 11/15/2010 10:47:33

Schedule #: 0

Description: Change to Schedule 1

Start Date: 

<<	<	1	2	3	4	5	6	7	8	9	10	11	12	13	14	15	16	17	18	19	20	21	22	23	24	25	26	27	28	29	30	31	>>
----	---	---	---	---	---	---	---	---	---	---	----	----	----	----	----	----	----	----	----	----	----	----	----	----	----	----	----	----	----	----	----	----	----

Start Time (HH:MM:SS): 00:00:00

Period: 0 Days

Days: Sun Mon Tue Wed Th Fri Sat

Action: change schedules

Affected Relays: 1 2 3 4 5 6 7 8 9 10

Pulse Duration: 1.5 secs

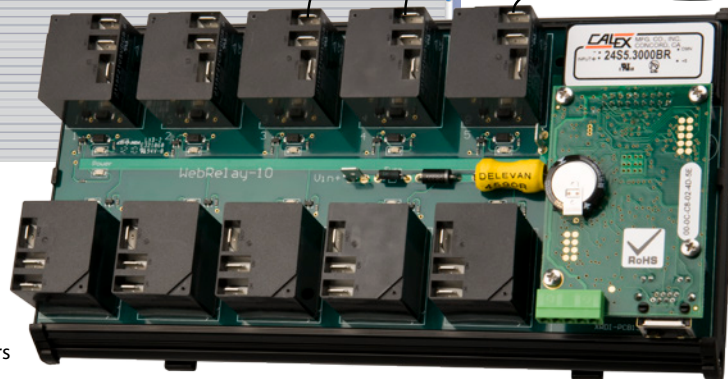
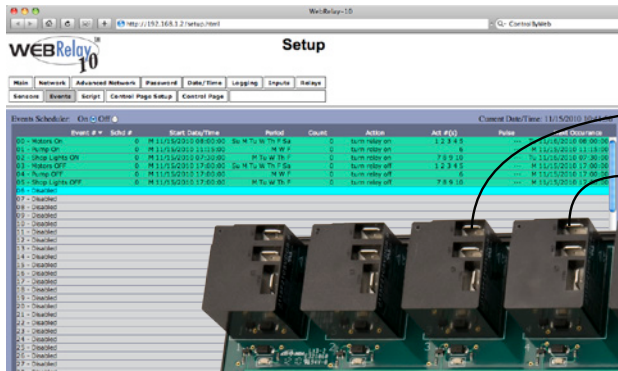
\*Select a period of one day in order to specify days on which the event will occur.

Cancel Update

Event Scheduling Page

### APPLICATIONS & SPECS

#### Scheduled Lighting Control



#### Additional Applications

- ✓ Automation Controller
- ✓ Industrial Automation
- ✓ Car Wash Industry
- ✓ More...

#### Models:

- X-WR-10R12-IP

#### Power Requirements

- Voltage: 10-36VDC
- Max Current: 53mA - 1.2A
- Note: Current based upon voltage applied and device settings. See users manual for complete breakdown.

#### Relay Contacts

- Number of Relays: 10
  - N.O.
    - 40A @ 240VAC resistive
    - 30A @ 277VAC General Purpose
    - 2hp @ 250VAC
  - N.C.
    - 30A @ 240VAC, 30VDC resistive
    - 20A @ 277VAC General Purpose
    - 1-1/2 hp @ 250VAC
- Contact Type: SPDT (Form 1C)
- Load Type: General Purpose
- Contact Resistance: < 30 milliohms initial
- Contact Material: AgSnO2
- Electrical Life: 100K cycles (Typical)
- Mechanical Life: 10M cycles (Typical)
- Environmental Rating: Over voltage Category II, Pollution Degree 2
- Relay Modes: ON/OFF or Pulse
- Pulse Timer Duration: 0.1 to 86,400 Seconds (1-day)
- Relay Connections: 1/4" Tab Terminals

#### Digital Inputs

- Number of Inputs: 2
- Type: Non-Isolated
- Voltage Range: 0-5VDC
- Current: 47K Pullup
- Minimum Hold Time: 20ms
- Input Isolation: Non-Isolated
- Input Functions: Counters, Email Alerts, SNMP Traps
- Maximum Count: 32-bit
- Max Count Rate: 25Hz
- Edge Trigger: Rising, Falling or Both

#### Temperature Sensors

- Maximum Number of Sensors: 8
- Type: 1-Wire Dallas Semiconductor DS18B20
- Temperature Range: -67°F to 257°F (-55°C to +125°C)
- Accuracy: ±0.5°C (from -10°C to +85°C)
- Sensor Functions: Monitor Temperature, Log Temperature, Email Alerts, SNMP Traps
- Humidity Type: Xytronix Model X-DTHS-WM wall mount sensor
- Humidity Range: 0-100% RH
- Accuracy: ±1.8%

#### Real-Time Clock

- Manual or NTP(Network Time Protocol) setup
- NTP Sync Period: Once, Daily, Weekly, On Power-up
- Auto Daylight Savings Adjustment
- Battery (capacitor) Power Backup

#### Capacitor Power Backup

- Backup Functions: Retain Real-Time Clock, External Variables, Relay State
- Backup Duration: 3 days minimum

#### Network

- Type: 10/100 Base-T Ethernet Port
- Setup: Static IP address assignment or DHCP, HTTP port selectable

#### LED Indicators

- Number of LEDs: 13
  - Power on
  - Relay coil energized 1-10
  - Network linked
  - Network activity

#### Physical

- Size:
  - 9.125in (232mm) wide
  - 4.25in (126mm) tall
  - 2.425in (62mm) deep
- Weight: 22 oz (626 grams)
- Enclosure Material: PVC
- Enclosure Flame Rating: UL94 V1
- Operating Temperature: -40°F to 150°F (-40°C to 65.5°C)

#### Protocols

- HTTP, XML, Modbus, SNMP, SMTP, Remote Services, and Remote Monitoring

#### Logging

- Log File Size: 512K max 17900 logs
- Storage: Nonvolatile Flash
- Buffer Architecture: Circular Buffer
- Log data can be periodically read and stored on a computer

#### Password Settings

- Password protection on setup page: Yes
- Password protection on control page: Optional
- Password Encoding: Base 64
- Max Password Length: 10 Characters

#### Regulatory Compliance

- Electromagnetic Compliance:
  - IEC CISPR 22, CISPR 24, FCC 47CFR15, EU EN55024, EN55022
- Product Safety:
  - IEC 60950-1 / EN 60950-1